

# What is the best diagnosis?

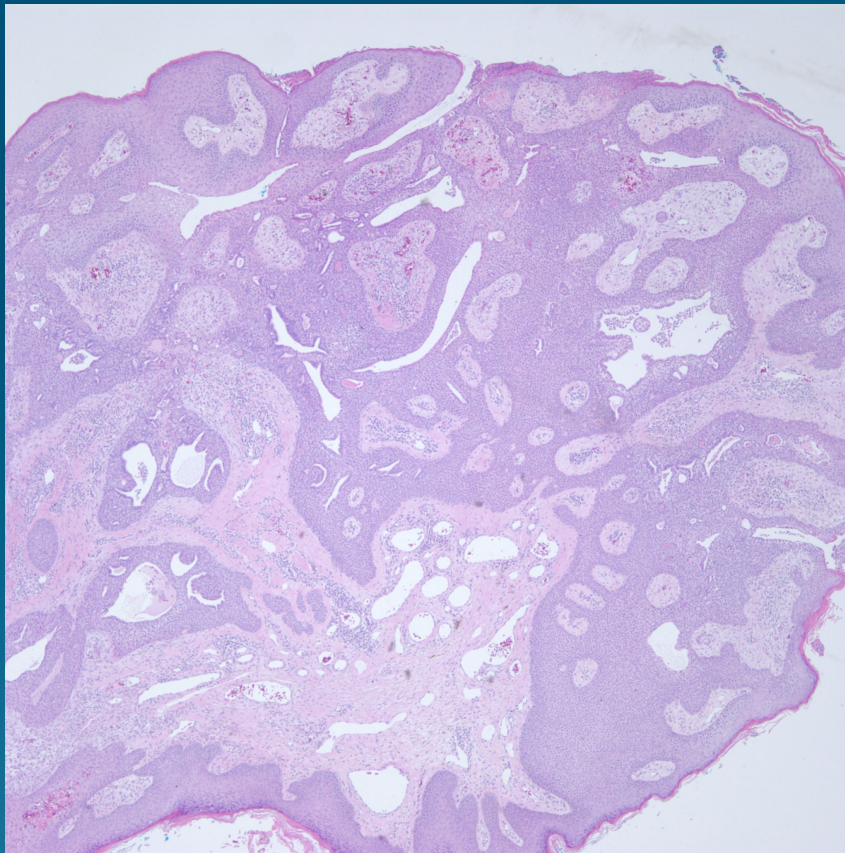
- A. Hidradenoma papilliferum
- B. Cutaneous plasmacytoma
- C. Nevus sebaceus
- D. Eccrine poroma
- E. Syringocystadenoma papilliferum



# Syringocystadenoma Papilliferum



# Pearls



- Endo- and exophytic papillary epithelial proliferation connected to epidermis
- Admixed glands with apocrine epithelium (apocrine snouting)
- Epithelium envelopes mature plasma cells
- Commonly associated with nevus sebaceus